

Wireless Devices

(For compatibility details, visit us at Paradox.com)



K37
32 Zone Wireless
Fixed LCD Keypad



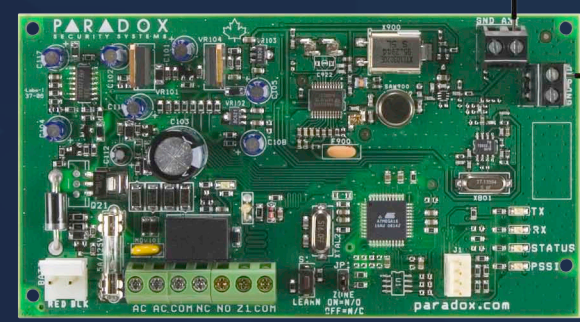
K32RF
32 Zone Wireless LED
Keypad Module



GS250
Gpower Wireless
Multi-axis
Detector



**REM3 / REM2 /
REM15 / REM101**
Remote Controls



RPT1
Wireless Repeater
Module



2WPGM
2 Way Wireless
PGM



G550
Wireless
Glassbreak
Detector



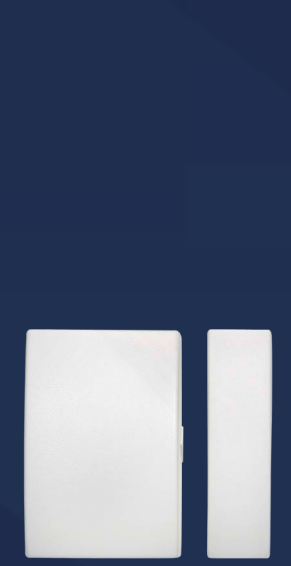
WS588P
Wireless
Smoke Detector



WC588P
Wireless Carbon
Monoxide Detector



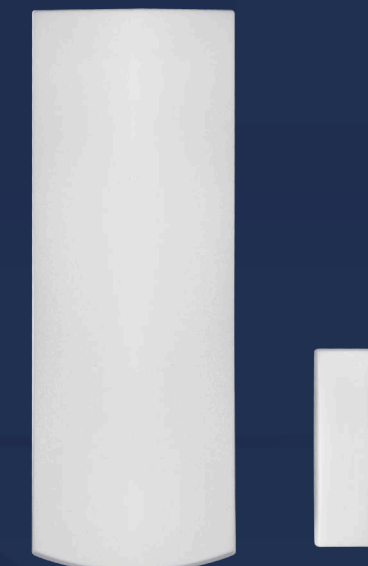
WH588P
Wireless
Heat Detector



DCT2
Ultra-Small
Door Contact



DCTXP2
2 Zone Wireless
Door Contact



DCT10
2 Zone Long-Range
Door Contact



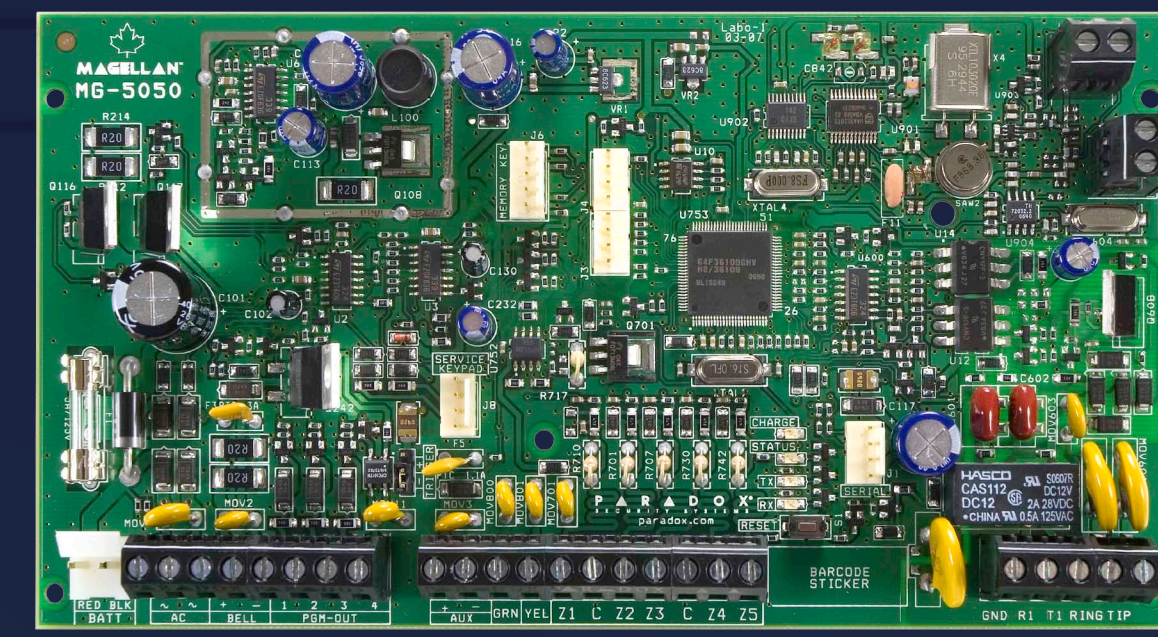
PMD85
Pet Immune
Outdoor PIR



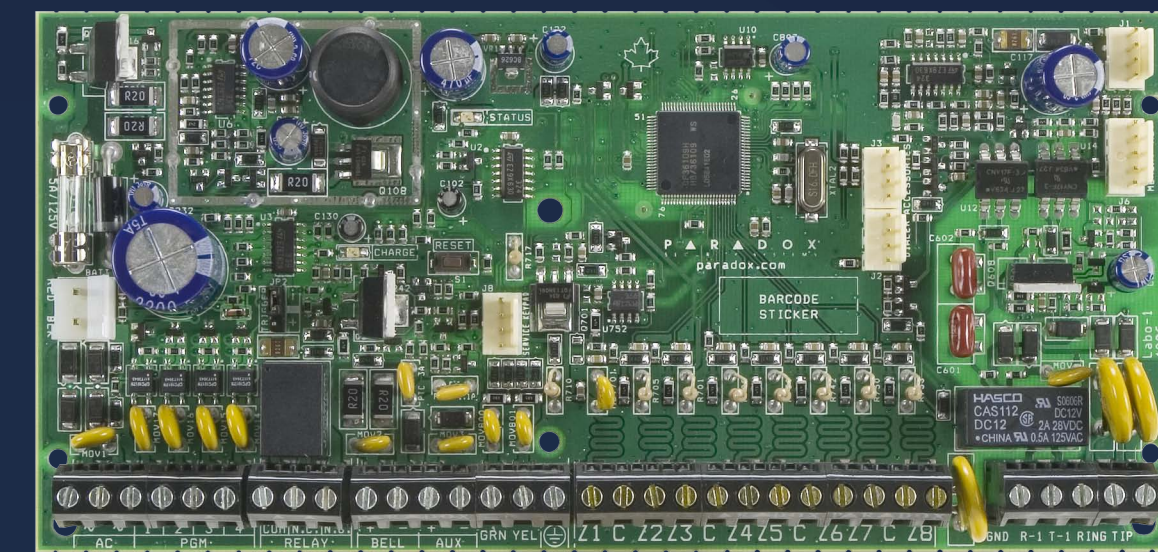
PMD75
Pet Immune
Dual-Optic PIR



PMD2P
Pet Immune
Single-Optic PIR



MG5000: 2 to 32 Zone Wireless Control Panel
MG5050: 5 to 32 Zone Wireless Control Panel



SP65: 9 to 32 Zone Control Panel
SP4000: 4 to 32 Zone Control Panel
SP5500: 5 to 32 Zone Control Panel
SP6000: 8 to 32 Zone Control Panel
SP7000: 16 to 32 Zone Control Panel

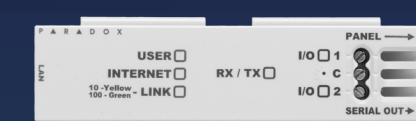
Communication Modules



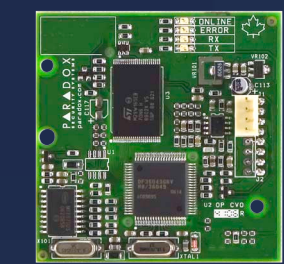
PCS250
GPRS/GSM Communicator Module



PCS250G
GPRS Communicator Module



IP150
Internet Module

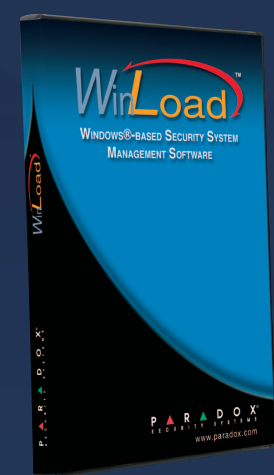


VDMP3
Plug-In Voice Module

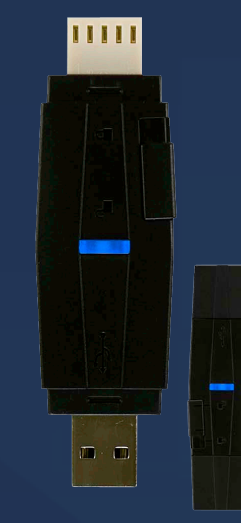
Accessories



iParadox App
Alarm System Control



WinLoad
Software



PMC5
Memory Key



307USB
Direct Connect
Interface



BabyWare
Software

| Feature | MG5000 | MG5050 | SP65 | SP4000 | SP5500 | SP6000 | SP7000 |
|-------------------------------|-----------------|-----------------|--------------------|-----------------|-----------------|--------------------|------------------|
| StayD | ✓ | ✓ | ✓ | ✓ | ✓ | ✓ | ✓ |
| Maximum Zones | 32 | 32 | 32 | 32 | 32 | 32 | 32 |
| On-board Hardwired Zones | 2 (4 with ATZ) | 5 (10 with ATZ) | 8+1* (18 with ATZ) | 4 (8 with ATZ) | 5 (10 with ATZ) | 8 (16 with ATZ) | 16 (32 with ATZ) |
| Built-in Wireless Transceiver | ✓ | ✓ | - | - | - | - | - |
| Expansion Zones | 24 | 24 | 24 | 24 | 24 | 24 | 16 |
| Keypad Zones | 15 | 15 | 15 | 15 | 15 | 15 | 15 |
| Partitions** | 2 | 2 | 2 | 2 | 2 | 2 | 2 |
| Users | 32 | 32 | 32 | 32 | 32 | 32 | 32 |
| PGMs | 16 (2 on-board) | 16 (4 on-board) | 3 | 16 (1 on-board) | 16 (2 on-board) | 16 (2+2† on-board) | 16 (4 on-board) |
| Solid-State PGM (+/- Trigger) | - | PGM4 only | - | - | - | - | ✓ |
| In-Field Firmware Upgradeable | ✓ | ✓ | ✓ | ✓ | ✓ | ✓ | ✓ |

* The 9th zone input is a panic / tamper input that can be reprogrammed as a zone
** 1-partition system when used with a K636 keypad
† Optional

Hardwired Keypads



TM50 Touch
Intuitive Touchscreen

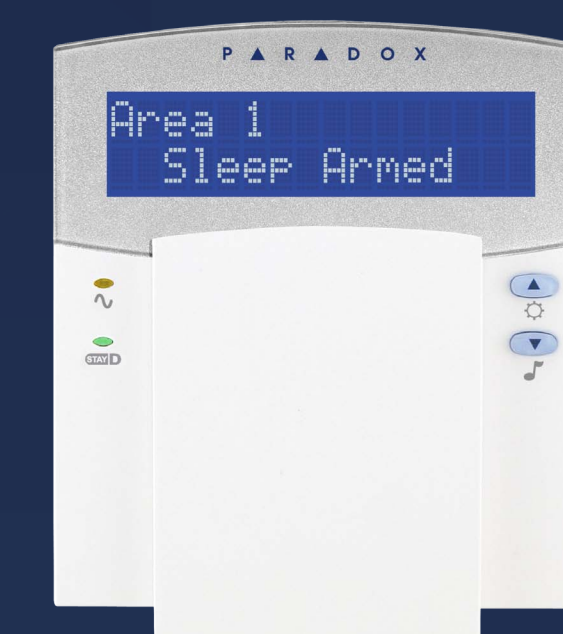


K32LX
32-Character Hardwired
LCD Keypad with
Built-in Transceiver
(SP Series Only)



K35
32 Zone Hardwired
Fixed LCD Keypad

X X
ZONE 1 ZONE 2
X X
ZONE 3 ZONE 4



K32LCD
32 Character Hardwired
LCD Keypad



K10H/V
10 Zone LED Keypad

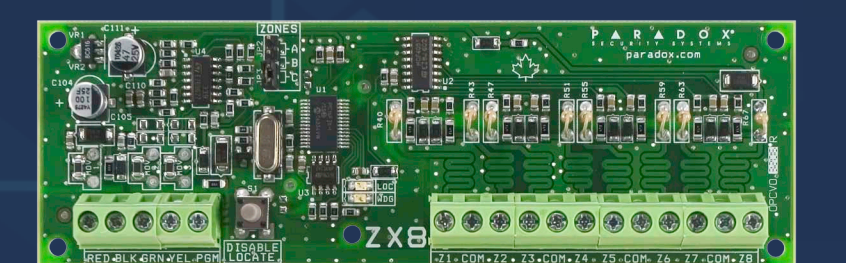
Zone Expansion



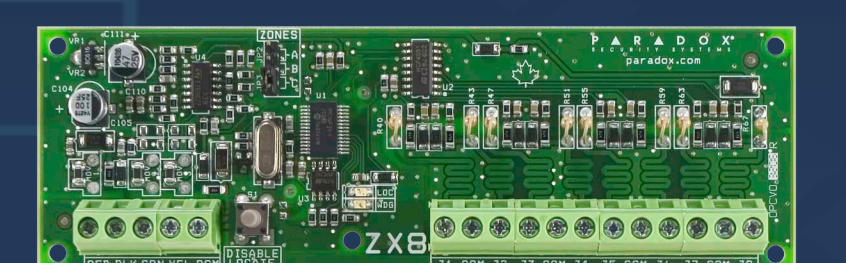
RTX3
Wireless Expansion Module
(SP Series Only)



RX1
Wireless Receiver Module
(SP Series Only)



ZX8
8 Zone Expansion Module



ZX8SP
8 Zone Expansion Module
(SP Series Only)

